



BEAN•e•doo®

**500MR
Mastic Remover**

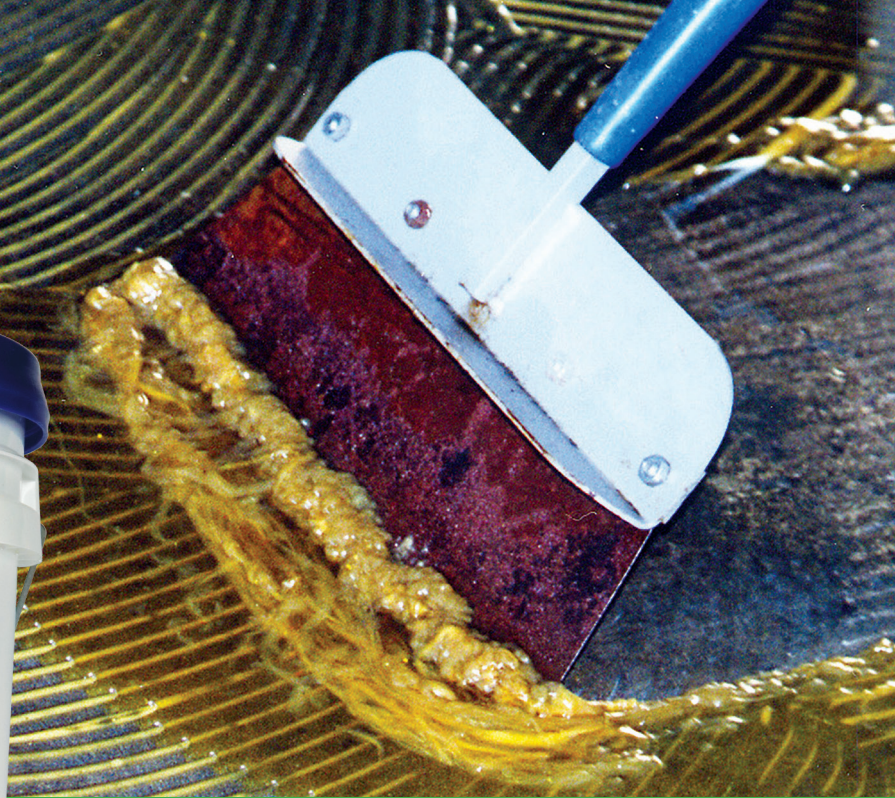
For Concrete Surfaces

ORIGINAL FORMULA

- SAFE! No Petroleum Solvents
- Virtually No Odor
- Made with 100% American-Grown Soybeans

5 Gallons 640 FL OZ (18.9L)

CAUTION: EYE AND SKIN IRRITANT. See back panel for additional precautions. Keep out of reach of children. VT, 1/12



BEAN•e•doo® 500MR Mastic Remover

REMOVE MASTIC WITH EASE

- Effectively removes newer mastics, layered adhesives, asbestos/black mastic and 50+ year-old glues
- Virtually no-odor
- Less than 3% VOC and GHS Compliant
- Made with 100% American-grown soybeans



Coverage: Up to 200 square feet per gallon

See our full line of products

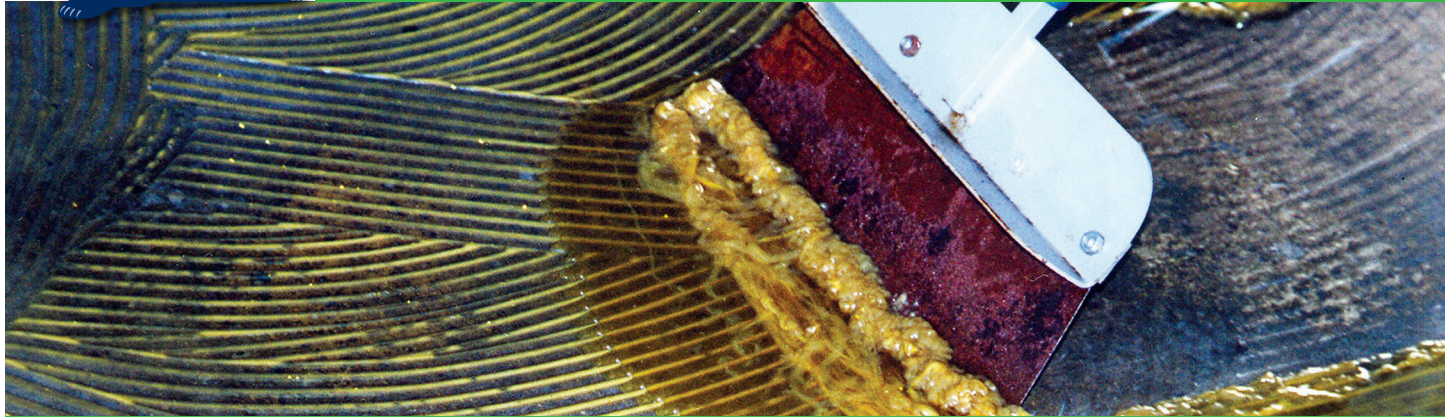
Visit: www.franmar.com or

Call: 800.538.5069





PRODUCT DATA



BEAN•e•doo® 500MR Mastic Remover

Ideal for use in occupied areas like post offices, schools, hospitals and other public places where safety is important. **BLUE BEAR® BEAN•e•doo® 500MR Mastic Remover** removes newer mastics, layered adhesives and even glues 50+ years old, using the power of soybeans. It's the first product to pass both performance and environmental safety tests by the USPS for the removal of mastic containing asbestos! Contractors find that **BEAN•e•doo** works more efficiently, saves time, and helps create a safer restoration site compared to traditional hazardous chemical mastic removers.

Usage Tips:

- Use a commercial sprayer or metal watering can to apply **BEAN•e•doo** in large areas.
- Protect floor drains and areas where product would naturally flow on uneven surfaces with sand, Oil-Dri®, or kitty litter.
- A rotary floor machine used on a low RPM speed helps during the water/degreaser clean up steps.
Use only after scraping up softened mastic.

Safe for use on: Concrete

Do not use on: Wood surfaces

Coverage: One gallon will generally cover between 100-200 square feet. Many customers report getting up to 200 square feet per gallon.

Test Area: Due to variances in surfaces and conditions, always test in a small, inconspicuous area before using on complete project.

Application: Apply **BEAN•e•doo** directly on the concrete surface. Spread mastic remover around with a straw broom, long handled brush or squeegee using light pressure. If applying to mastic with trowel ridges, cover all trowel ridges with product. Allow **BEAN•e•doo** to sit until mastic softens. (*Generally asbestos/black mastics will soften in 1-2 hours, and vinyl or acrylic mastics will soften in 4-8 hours.*) After mastic has softened, remove with a long handled scraper or squeegee. Reapply if necessary.

NON-EMERGENCY
Call: 800.538.5069
www.franmar.com
Bloomington, IL
61702

CHEMICAL EMERGENCY:
Spill, leak, fire, exposure or accident,
call CHEMTREC day or night.
USA and Canada: 800.424.9300
CCN717946 or +1 703.527.3887
(Collect calls accepted)

Clean Up: Clean remaining thin residue with **BLUE BEAR® Emerge™ 700DG Degreaser** or water using a scrub brush and/or mop or power washer. Allow surface to dry before further preparations.

Residue Test: After rinsing, apply water to various small areas on the concrete and rub with fingers. If water turns cloudy white, it indicates there is **BEAN•e•doo** remaining on the surface. Repeat clean up steps and retest.

Storage: Keep container closed when not in use.

Precautions: Concrete surfaces may darken with use of **BEAN•e•doo**. For porous and/or cracked substrates, use commercial absorbent to help in pick-up of mastic residue. Always use care to prevent overspray from getting on surfaces other than the one being prepped or cleaned. Do not use **BEAN•e•doo** on wood surfaces.

Biodegradable: Meets or exceeds ASTM standards

Flash Point: Above 425°F (218.33°C)

pH Level: 6.65 pH of 1/10 wt/wt solution in soft water

CAUTION: May cause mild skin irritation. May cause eye irritation. May be harmful if swallowed. Keep out of reach of children.

Ingredients: Soy Ester, Proprietary Surfactant Blend

VOC (Volatile Organic Compound) content:
2.3%, .06 lb/g, 20 g/l California and OTC Compliant



www.franmar.com
Rev. 12/5/22