



# BEAN•e•doo<sup>®</sup> 500MR Mastic Remover

## REMOVE MASTIC WITH EASE

- Effectively removes newer mastics, layered adhesives, asbestos/black mastic and 50+ year-old glues
- Virtually no-odor
- Less than 3% VOC and GHS Compliant
- Made with 100% American-grown soybeans



Coverage: Up to 200 square feet per gallon

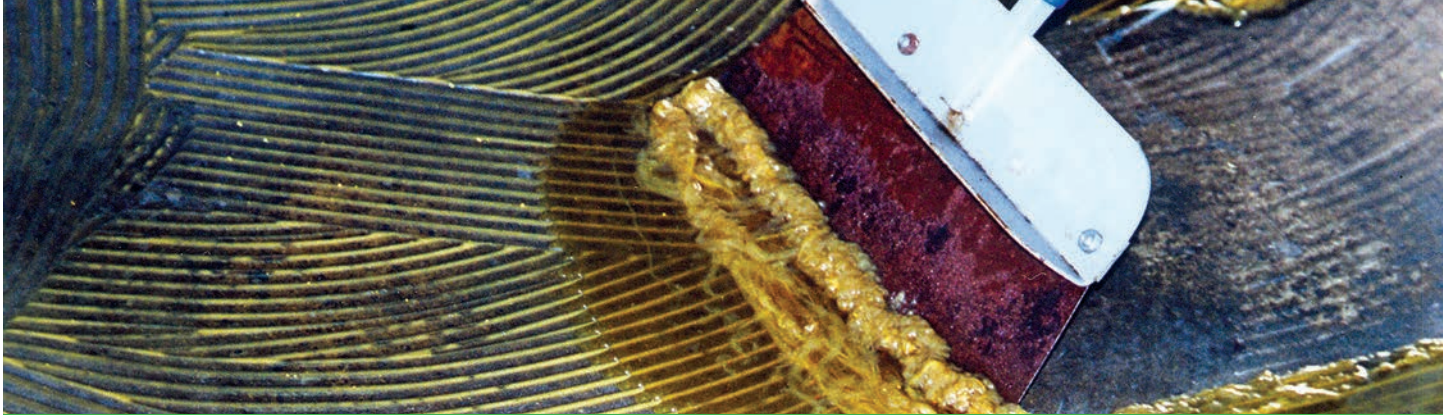
See our full line of products

Visit: [www.franmar.com](http://www.franmar.com) or  
Call: 800.538.5069





# PRODUCT DATA



## BEAN•e•doo® 500MR Mastic Remover

Ideal for use in occupied areas like post offices, schools, hospitals and other public places where safety is important. **BLUE BEAR® BEAN•e•doo® 500MR Mastic Remover** removes newer mastics, layered adhesives and even glues 50+ years old, using the power of soybeans. It's the first product to pass both performance and environmental safety tests by the USPS for the removal of mastic containing asbestos! Contractors find that **BEAN•e•doo** works more efficiently, saves time, and helps create a safer restoration site compared to traditional hazardous chemical mastic removers.

### Usage Tips:

- Use a commercial sprayer or metal watering can to apply **BEAN•e•doo** in large areas.
- Protect floor drains and areas where product would naturally flow on uneven surfaces with sand, Oil-Dri®, or kitty litter.
- A rotary floor machine used on a low RPM speed helps during the water/degreaser clean up steps.  
**Use only after scraping up softened mastic.**

**Safe for use on:** Concrete

**Do not use on:** Wood surfaces

**Coverage:** One gallon will generally cover between 100-200 square feet. Many customers report getting up to 200 square feet per gallon.

**Test Area:** Due to variances in surfaces and conditions, always test in a small, inconspicuous area before using on complete project.

**Application:** Apply **BEAN•e•doo** directly on the concrete surface. Spread mastic remover around with a straw broom, long handled brush or squeegee using light pressure. If applying to mastic with trowel ridges, cover all trowel ridges with product. Allow **BEAN•e•doo** to sit until mastic softens. *(Generally asbestos/black mastics will soften in 1-2 hours, and vinyl or acrylic mastics will soften in 4-8 hours.)* After mastic has softened, remove with a long handled scraper or squeegee. Reapply if necessary.

**Clean Up:** Clean remaining thin residue with **BLUE BEAR® Emerge™ 700DG Degreaser** or soap and water using a scrub brush and/or mop or power washer. Allow surface to dry before further preparations.

**Residue Test:** After rinsing, apply water to various small areas on the concrete and rub with fingers. If water turns cloudy white, it indicates there is **BEAN•e•doo** remaining on the surface. Repeat clean up steps and retest.

**Storage:** Keep container closed when not in use.

**Precautions:** Concrete surfaces may darken with use of **BEAN•e•doo**. For porous and/or cracked substrates, use commercial absorbent to help in pick-up of mastic residue. Always use care to prevent overspray from getting on surfaces other than the one being prepped or cleaned. Do not use **BEAN•e•doo** on wood surfaces.

**Biodegradable:** Meets or exceeds ASTM standards

**Flash Point:** Above 425°F (218.33°C)

**pH Level:** 6.65 pH of 1/10 wt/wt solution in soft water

**CAUTION:** May cause mild skin irritation. May cause eye irritation. May be harmful if swallowed. Keep out of reach of children.

**Ingredients:** Soy Ester, Ethoxylated Alcohol

**VOC (Volatile Organic Compound) content:**  
2.3%, .06 lb/g, 20 g/l California and OTC Compliant

[www.franmar.com](http://www.franmar.com)  
800-538-5069  
10282 E 1400 North RD  
Bloomington, IL  
61705

**CHEMICAL EMERGENCY:**  
Spill, leak, fire, exposure or accident,  
call CHEMTREC day or night.  
USA and Canada: 800.424.9300  
CCN717946 or +1 703.527.3887



[www.franmar.com](http://www.franmar.com)  
Rev. 7/16/25